

Visualization Notes

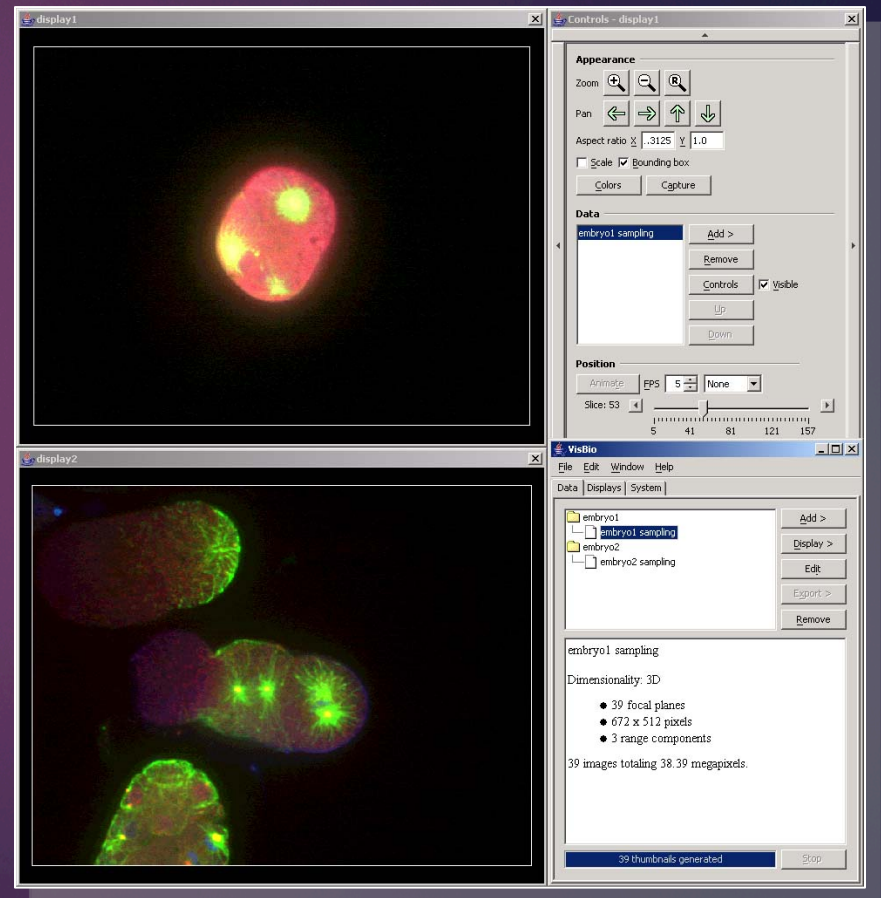
ILYA ZASLAVSKY

SAN DIEGO SUPERCOMPUTER CENTER

LMI WORKSHOP, HANOI, AUG 18-22, 2014

What is Information Visualization?

- ▶ Information visualization is the use of interactive graphical interfaces to display, measure, and understand large amounts of data.
- ▶ Information visualization combines the aspects of graphics, human-computer interaction, and human-information interaction.



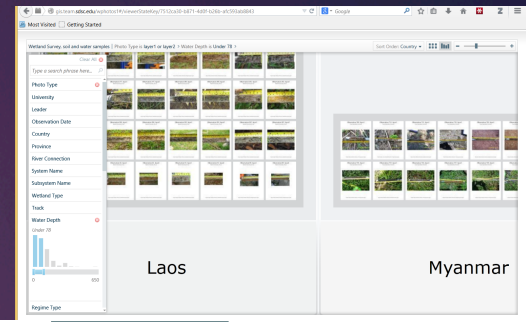
Many visualization examples

- ▶ Many visualization systems, component of data analysis packages or separate
- ▶ Many purposes:
 - ▶ Better understanding of large volumes of data, “visual data mining”
 - ▶ Better interpretation and more efficient decision-making via “actionable” data summaries
 - ▶ Understanding dynamics, causes and effects
 - ▶ Part of workflows, eg for quality control
 - ▶ Alert/warning systems
 - ▶ Management dashboards
 - ▶ A way to communicate meaning of data, “tell a story”
 - ▶ Education, engaging different audiences, esp ‘visual learners’

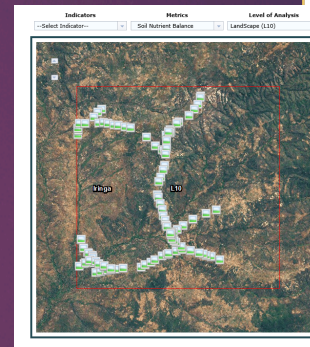
Interesting aspects

- ▶ Integrated visual analysis of data and images
- ▶ Cross-linked representation of scale-dependent data components: maps, charts, narratives, images; across scales
- ▶ Active visualization: encouraging users to experiment with and understand phenomena
- ▶ Better learning via new visual metaphors of traditional analyses, and animation

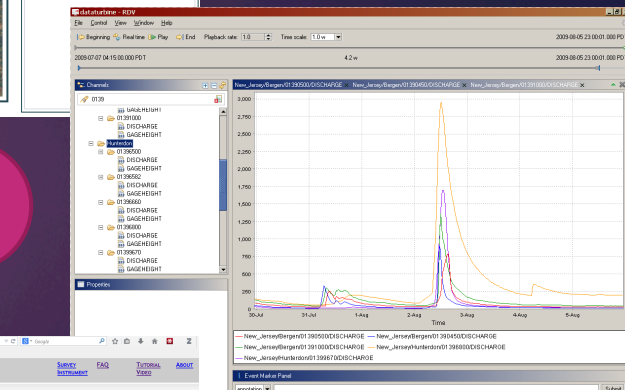
1



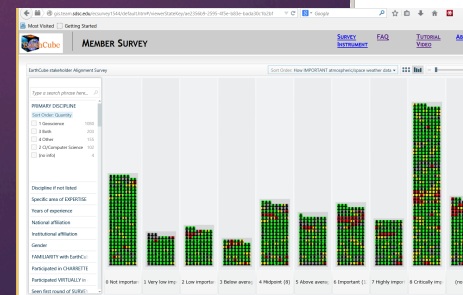
2



3



4

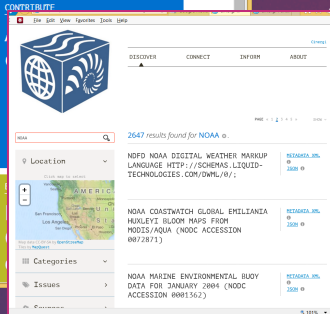
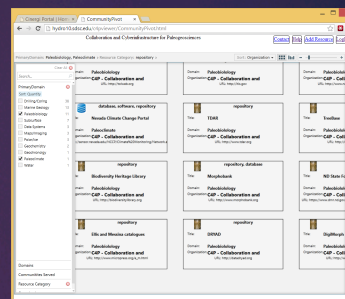
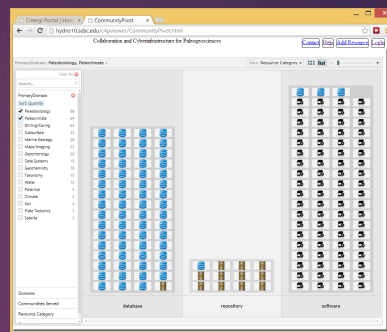
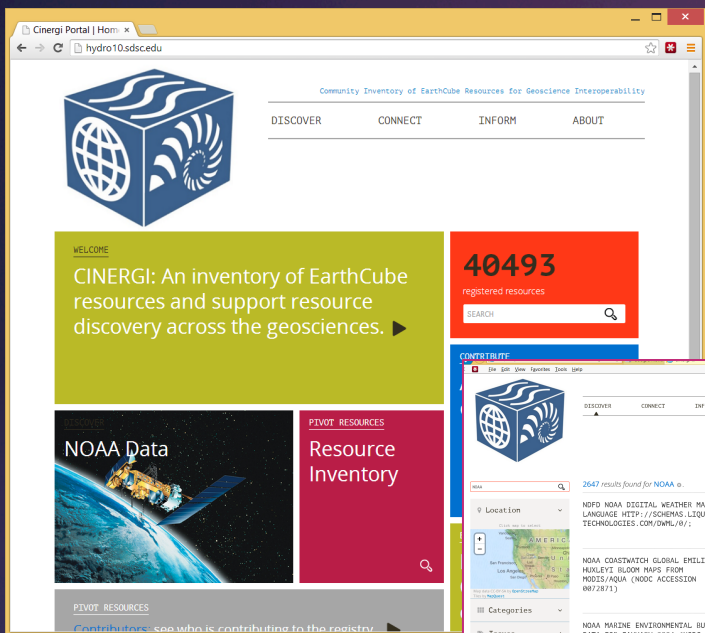


Metadata publishing in CINERGI

Domain Inventories

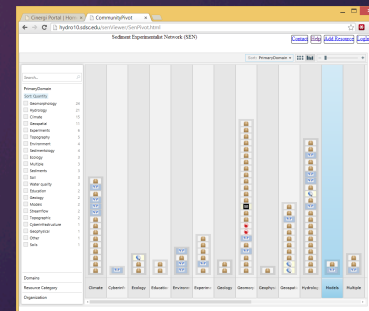
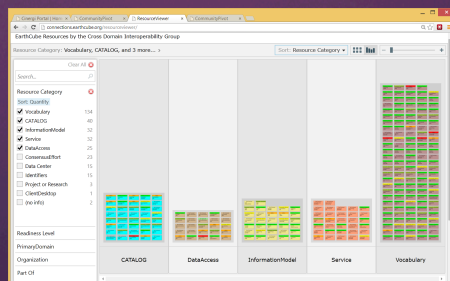
C4P RCN

SEN RCN



High-level assets

Domain workshops



Catalogs



Community **In**ventory of **E**arthcube **R**esources for **G**eoscience **I**nteroperability

CINERGI

Demonstrations

1. Visual analysis of data and images

- ▶ EarthCube Member Connections and Inventories
- ▶ Soil samples in LMI wetlands

2. Cross-linked representations

- ▶ Ecosystem services dashboard

3. Real time data viewing

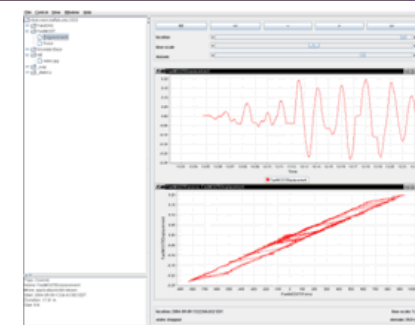
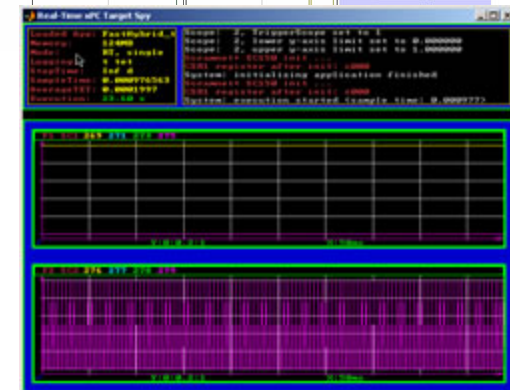
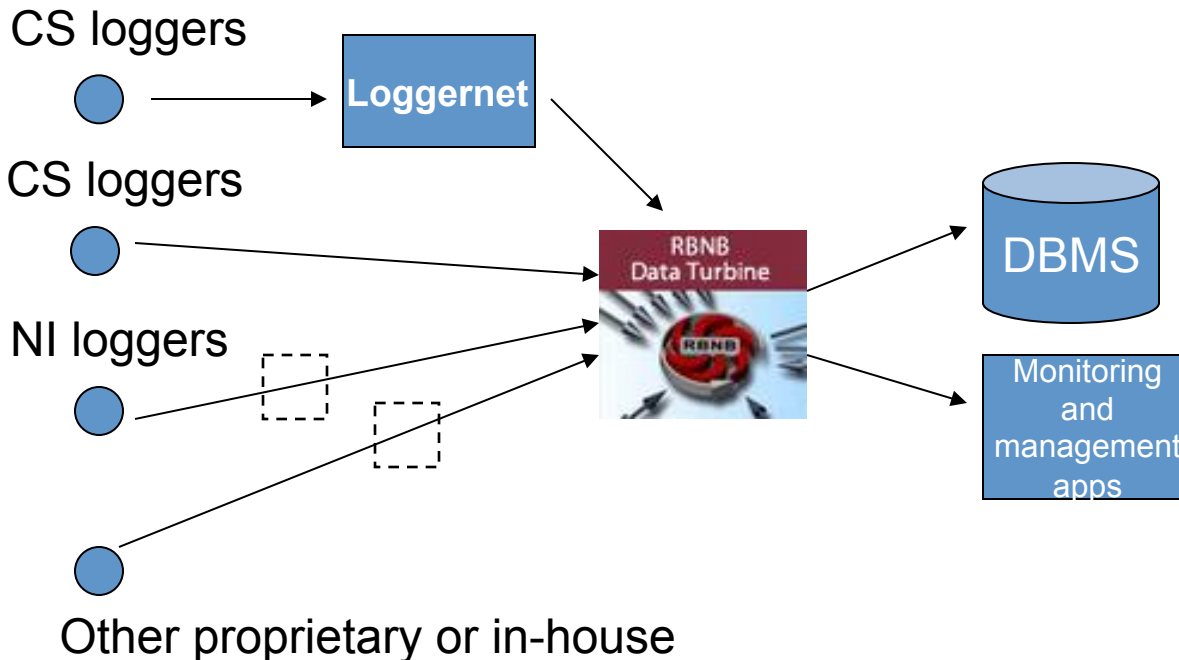
- ▶ Open Source Data Turbine

4. New visual metaphors and animation

- ▶ Online collaborative survey data analysis

Open Source DataTurbine: streaming data middleware

- Scalable, secure, programmable, versatile for different data types and vendor interfaces, developer community, with many applications written (e.g. data viewers and plug-ins); integrates with R, Kepler, CUAHSI HIS, cloud file sharing.
- Typical scenarios:



USGS NWIS
Real Time
CUAHSI
Service

OSDT Custom
Source

-Updated on timed intervals
-8000+ Sites

**Passing USGS
realtime data
via OSDT**



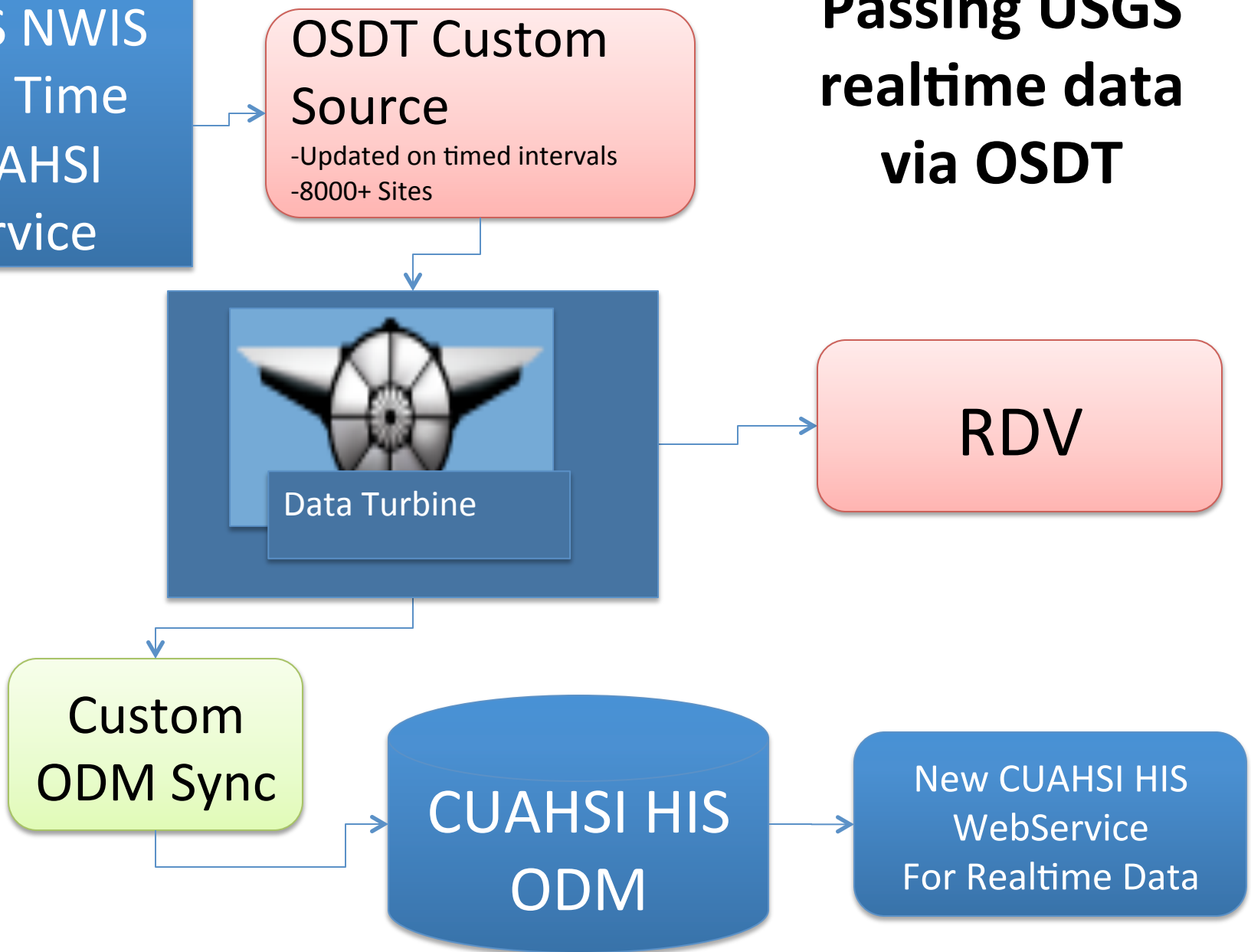
Data Turbine

RDV

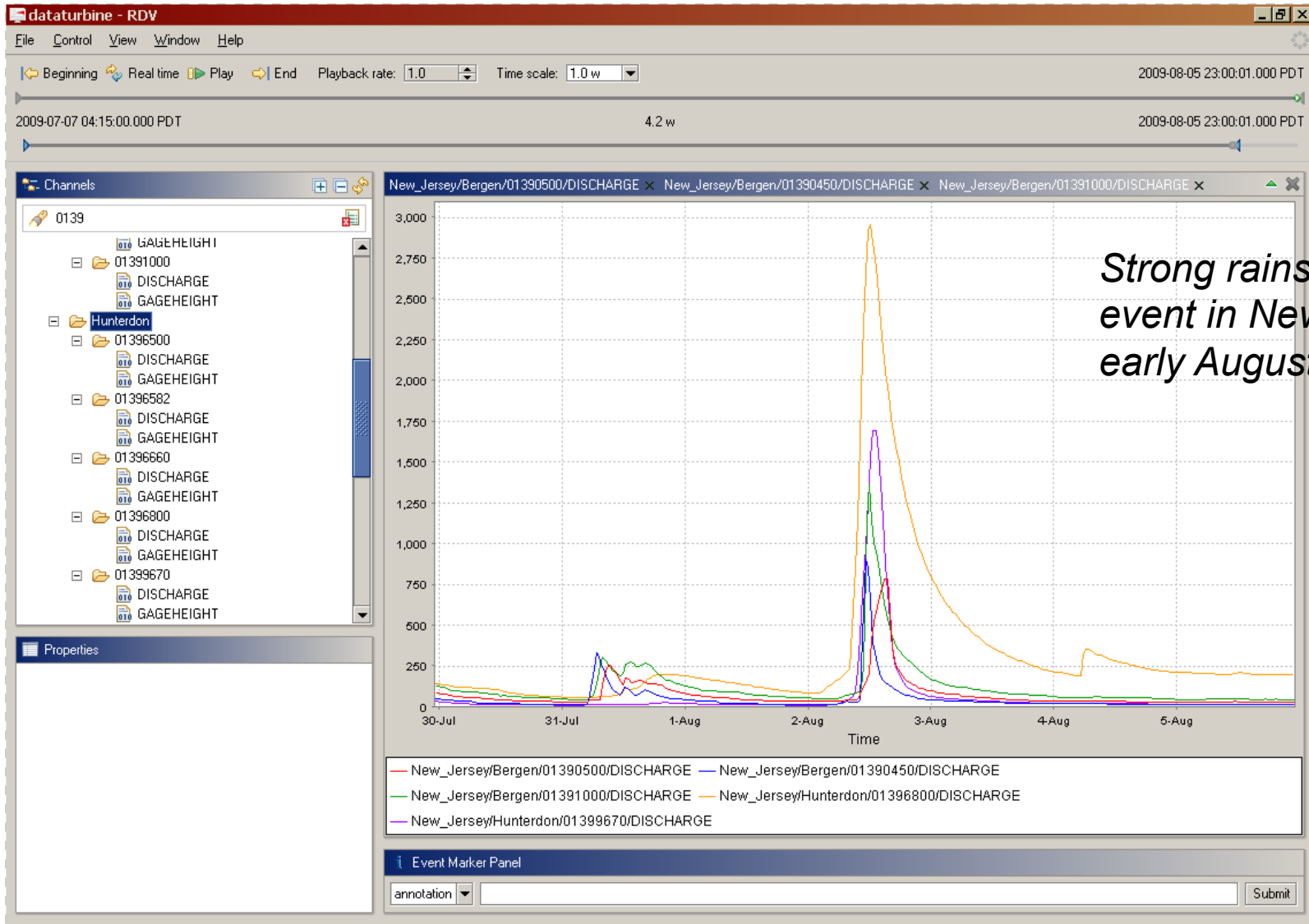
Custom
ODM Sync

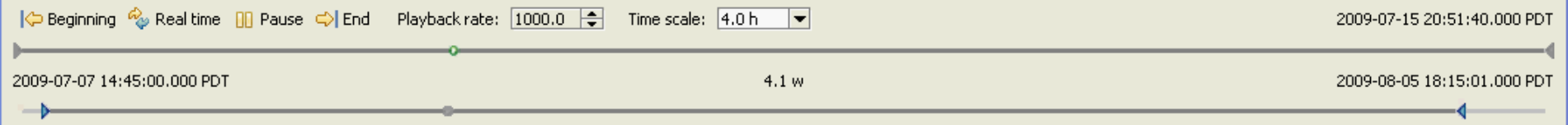
CUAHSI HIS
ODM

New CUAHSI HIS
WebService
For Realtime Data



RDV: Realtime Data Viewer





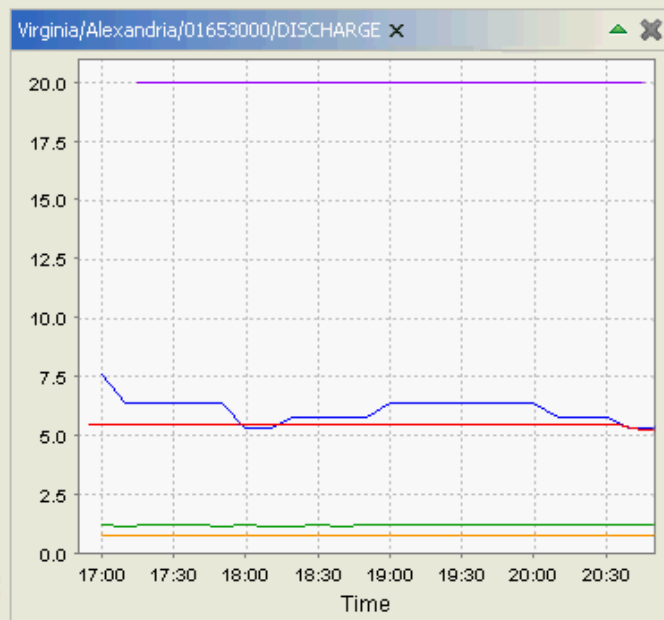
Channels

- 01645704
 - DISCHARGE
 - GAGEHEIGHT
- 01645762
 - DISCHARGE
 - GAGEHEIGHT
- 01646000
 - DISCHARGE
 - GAGEHEIGHT
- 01654000
 - DISCHARGE
 - GAGEHEIGHT
- 01656903
 - DISCHARGE
 - GAGEHEIGHT

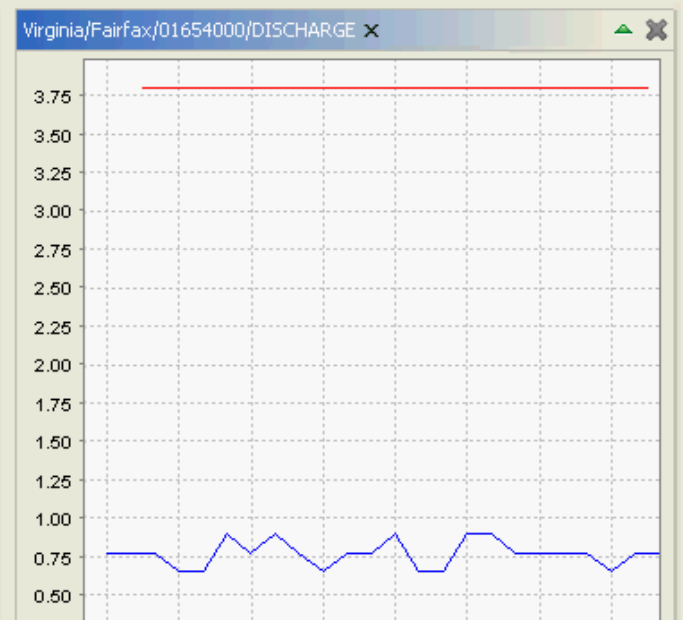
Properties

Virginia/Fairfax/01656903/DISCHARGE
 Numeric Data

Begins Tuesday, July 7, 2009 2:10:00.000 AM
 Lasts 4.2 w
 4 bytes



- Virginia/Alexandria/01653000/DISCHARGE
- Virginia/Arlington/01652500/DISCHARGE
- Virginia/Fairfax/01645704/DISCHARGE
- Virginia/Fairfax/01645762/DISCHARGE
- Virginia/Fairfax/01646000/DISCHARGE



- Virginia/Fairfax/01654000/DISCHARGE
- Virginia/Fairfax/01656903/DISCHARGE

Event Marker Panel

annotation